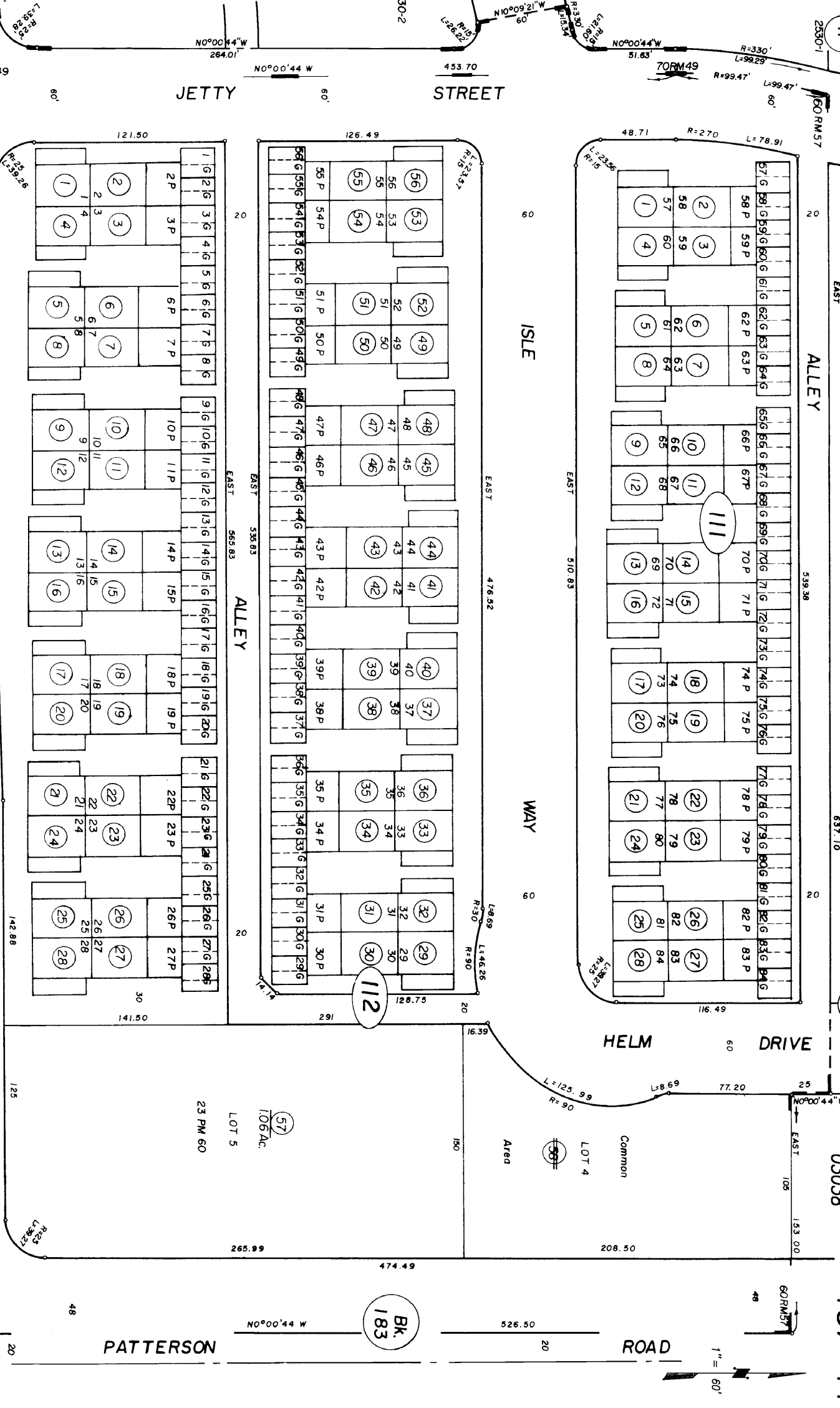


RANCHO EL RIO DE SANTA CLARA O'LA COLONIA, T.1N, R.22W.

TRACT 17

Tax Rate Area 03038

187-11



Portion Tract 2530-1, M.R. Bk. 60, Pg. 49
 Tract 2248, M.R. Bk. 60, Pg. 57 (Condo. Plan 4046-522)

TRACT Bk. 190
 2463-1
 CITY OF OXNARD
 Ventura County Assessor's Map.

DRAWN	E.L.C.&D.C.	REVISED	9-18-2007
REDRAWN		CREATED	5-1-1973
INKED		PLOTTED EFFECTIVE	73-74 ROLL
		PREVIOUS Bk. 183, Portion Pg. 21	
		Assessor's Parcel Numbers Shown in Circles.	
		Assessor's Parcel Numbers Shown in Squares.	
		Assessor's Manual Numbers Shown in Squares.	
		Compiled By: Ventura County Assessor's Office	

AREAS SHOWN ON THIS PAGE
 CITY SUPERVISOR'S OFFICE OR
 DIVISION TO VERIFY.